

# MAXIMIZE UPTIME. MINIMIZE MESS.

## YOUR PARTNER IN EFFICIENT PRINTING

Why choose CPC? Because we are connection technology experts. For more than 40 years, we have focused exclusively on connectors for use in a wide range of applications. We design, build and refine some of the world's highest-performing couplings to meet the most demanding specifications.

CPC solutions streamline fluid management from ink containers all the way through commercial printing equipment and processes.

### IN PRINT AND INK APPLICATIONS, CPC CONNECTORS:

- Reduce downtime with tool-free maintenance on serviceable components
- Minimize spillage at disconnection during maintenance, reducing waste and mess
- Reduce air inclusion during connection
- Minimize operator exposure during ink loading
- Are chemically resistant to a range of inks, providing durability and longevity
- Allow secure, single-handed operation with an ergonomic, easy-to-use thumb latch

## FROM INK PACKAGING TO FINISHED OUTPUTS: WHERE CONNECTORS FIT

### INK LOADING

- Connectors attached to pouches or bag-in-box solutions make ink loading fast, clean and easy
- Bag-in-box ink packaging is a more sustainable option than large rigid plastic jugs

### INK DELIVERY SYSTEM

- CPC connectors facilitate fluid flow through printheads, manifolds, tube sets, reservoirs, ink pumps and transfer lines
- Quick disconnects help reduce technician exposure to ink and fumes during service
- Fewer spills to clean up reduces hassles and improves machine uptime

## A FULL RANGE OF CONNECTORS FOR PRINT AND INK APPLICATIONS

### DF2 SERIES (DripFree™)

**DF2 DripFree™ Series** quick disconnects with 1/8" flow offer a lubrication-free flow path while providing drip free connections and disconnections.

NEW



DF2



### UDC & iUDC SERIES (UNIVERSAL DISPENSING COUPLER) ● 📶

**UDC & iUDC Series** couplings provide a universal connection to a 38mm fitment neck, allowing you to make instant connections to bulk packaging systems.

RFID-enabled IdentiQuik® couplings transfer both ink and critical information like device type, connected media, line connection status, and fluid and product data. The RFID technology is seamlessly integrated into the connection point, automatically reading data as ink containers are loaded into machines.



UDC



iUDC  
(in-line)



iUDC  
(mount)



### NS SERIES (NON-SPILL) 📶

**NS Series** couplings were built on the company's proven platform of non-spill valves designed to provide fast and leak-free fluid line connections.



NS1



NS4



NS212



Global print and ink industry leaders rely on CPC connector technologies to help deliver quick, clean material fills and fast, efficient equipment serviceability.

Enhance your printing performance with CPC's innovative coupling solutions.

### PMC & PLC® SERIES ●

**PMC & PLC® Series** cover a wide variety of applications through an extensive offering of chemically resistant materials and termination configurations.



PMC



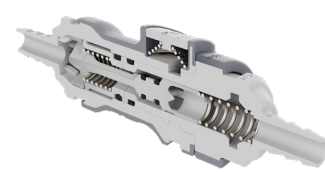
PLC®



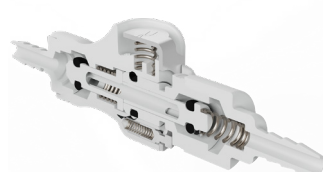
📶 RFID option available  
● Available in polypropylene



**DripFree™**  
DF2D170212S, DF2D220212S



**NON-SPILL**  
NS4D17004, NS4D22004



**PMC**  
PMCD1702, PMCD2202

Flowpath Size	1/8"	1/4"	1/8"
Cv	0.28	0.73	0.25
Valve Style	DripFree™	Non-Spill	Traditional Poppet
Spillage at Disconnect	<0.10 cc	<0.10 cc	~0.50 cc
O-ring Lubrication	• Non-lubed standard	• Krytox® GPL 205 Standard • Non-lubed not available	• Dow® Xiameter® PMX-200 Standard • Non-lubed available as a Custom
Base Material	Glass-filled Polypropylene	Glass-filled Polypropylene	Acetal
Color	Black	Grey	Natural
O-ring Material	• Silicone Standard • Other materials available	• EPDM Standard • Other materials available	• Buna-N Standard • Other materials available
Spring Material	316 SST	316 SST	316 SST
Thumb Latch Material	Acetal	Glass-filled Polypropylene	301 SST
Thumb Latch Performance	Ready to connect	Ready to connect	Latch must be in correct position
Spring in Flow Path	Yes	Yes	Yes
Overall Length (OAL)	1.65" (41.9mm)	2.34" (59.4mm)	1.65" (41.9mm)
Largest Diameter	0.90" (22.9mm)	1.05" (26.7mm)	0.80" (20.3mm)
Operating Temp Range	0 to 160°F (-17 to 71°C)	32 to 160°F (0 to 71°C)	-40 to 180°F (-40 to 82°C)
Operating Pressure	Vacuum to 120 psi, 8.3 bar	Vacuum to 120 psi, 8.3 bar	Vacuum to 120 psi, 8.3 bar



# WHERE CPC CONNECTORS FIT

## PRINTHEADS

For high quality and performance, ink flowing through the printhead must be free of contaminants. CPC's compact DripFree quick disconnect couplings deliver clean, no-drip, ink connections to protect printhead performance and maintain ink purity.



## PUMPS

CPC's quick disconnects are available in chemical-resistant materials, supporting reliable, contamination-free performance.



## FILTERS / DEGASSERS

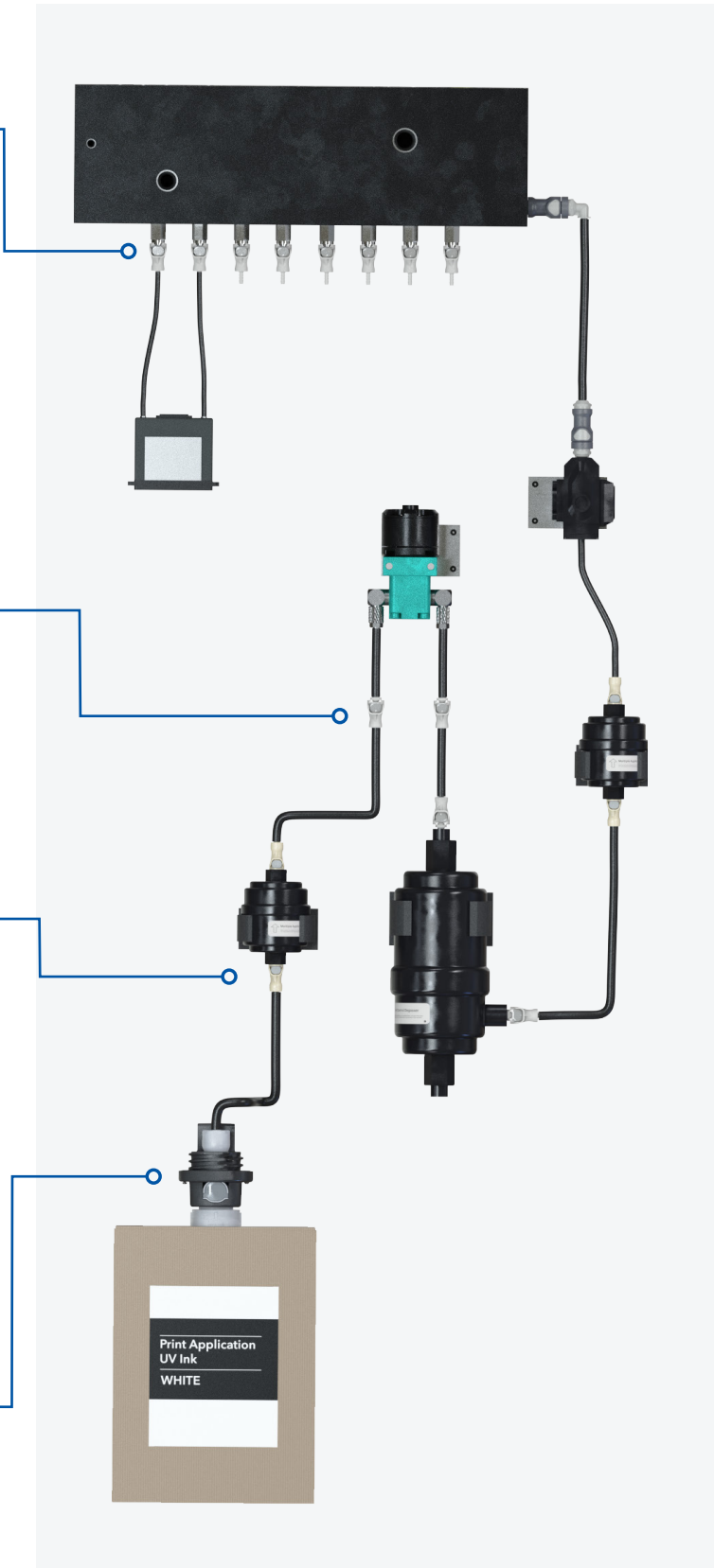
Ink conditioning through filters and degassers helps remove contaminants and bubbles that can affect print quality and equipment uptime.



Quick disconnect couplings make serviceability of these important components fast and efficient.

## BULK INK DELIVERY

CPC couplings provide operators a clean and easy method to swap out inks without drips, spills or messes.



# WE INSPIRE CONFIDENCE AT EVERY POINT OF CONNECTION

## NORTH AMERICA

4200 W. Round Lake Road  
Arden Hills, MN, USA 55112  
Toll Free: +1 (800) 444-2474  
Phone: +1 (651) 645-0091

## EUROPE

Kurhessenstrasse 15  
64546 Mörfelden-Walldorf  
Germany  
Phone: +49 6105 9743-003

## ASIA PACIFIC

Room 1802, Building A, IBC,  
391 Guiping Road,  
Xuhui District,  
Shanghai, China 200233  
Phone: +86 21 2411 2666  
Toll Free: +86 400 990 1978

# INNOVATION BORN FROM EXPERIENCE

CPC is a leading provider of quick disconnect couplings across a wide range of applications including industrial, medical, biopharma and liquid cooling.

Our broad and deep fluid management experience allows us to innovate in meaningful ways, anticipate future challenges, and bring you the best purpose-built solutions.

# WANT TO COLLABORATE?

Visit us online to access our interactive web tools

- ASK AN ENGINEER
- PRODUCT SPECIFIER
- WHITE PAPERS
- CAD FILES

Visit us at [cpcworldwide.com/print](https://cpcworldwide.com/print) to get started



WARRANTY: All sales are subject to Colder Products Company's limited express warranty set forth in the CPC catalog. Visit [cpcworldwide.com/warranty](https://cpcworldwide.com/warranty) for more information.  
COPYRIGHT © 2025 BY COLDER PRODUCTS COMPANY. CPC, Colder Products Company, and Colder Products are registered trademarks with the United States Patent and Trademark Office. For detailed trademark and patent information, please visit: [cpcworldwide.com/Trademarks](https://cpcworldwide.com/Trademarks).

CPC TRADEMARK STATEMENT: IdentiQuik®, PLC® are registered trademarks with the U.S. Patent & Trademark Office. All other trademarks or service marks are property of their respective owners. For detailed trademark information, please visit: <https://www.cpcworldwide.com/trademarks>.

WARNING: Due to the wide variety of possible fluid media and operating conditions, unintended consequences may result from the use of this product, all of which are beyond the control of CPC. It is the user's responsibility to carefully determine and test for compatibility for use with their application. All such risks shall be assumed by the buyer.



# QUICK DISCONNECT COUPLINGS FOR INK HANDLING

# CLEANER. FASTER. MORE EFFICIENT.

Global print and ink industry leaders rely on CPC connector technologies to help deliver quick, clean material fills and fast, efficient equipment serviceability.

Enhance your printing performance with CPC's innovative coupling solutions.